



Locomotive Inbound Inspection Report
 Document Control No.: QF-10007
 Release Document :
 Revision: Rev 1

Model GP38 Road No. WFP 2205 Frame No. _____ Sold To _____
 OEM Serial # _____ Date Built _____ Origin _____
 Inspector: BRIGGS/GRIFF Location: PADUCAH Date: 1/13/2016

BOTTOM INSPECTION

Front: SHORT Nose: LOW MU: Yes MU Hoses: NO
 Dynamics: YES Extended: NONE Grid(s)Condition: FAIR
 Bell: NO Horn: No Frame Condition: FAIR
 Fuel Tank Size: 2000 Retention Tank: NO Condition:

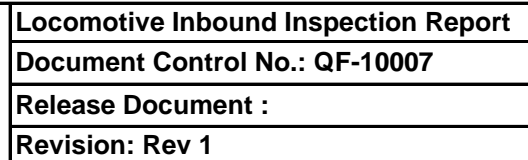
Wheels: L1 Dummy L4 R1 Dummy R4
 SIZE: L2 L5 R2 R5
 L3 L6 R3 R6

Box TYPE: Hyatt/Timken
 1: H 2: H 3: H 4: H 5: N/A 6: N/A
 T.M. Type: 1 NONE 4 NONE List Cut/Missing TM leads: ALL LEADS MISSING
 2 NONE 5 Gear Ratio: Brake Shoe Type: NONE
 3 NONE 6 Axle Drive Type & Condition: NONE

Draft Gear Type & Condition: Front: 391 Rear: 391
 Draft Gear Pocket Condition: Front: FAIR Rear: FAIR
 Coupler Type: Front: E Rear: E Self-Aligning: YES Condition: FAIR
 Pilot Type: ROCK PLOW General Condition: FAIR Plow Type: ROCK PLOW- OK
 Truck Type: 1 GP 2 GP Rigging Pin Type: 1 2
 Brake Cyl.: 1 HIGH 2 HIGH

LONGHOOD INSPECTION

Walkway Condition: FAIR Handrail Condition: FAIR
 Engine Type: MISSING S/N: EMD Block No. (from A frame): Bars Over:
 GE Engines: Block#: H'Number: MFG: Japstar Anleister BCI Other:
 Engine Overall Condition: FAIR Internal/Bottom End Condition:
 Turbo P/N: MISSING S/N: Condition: Diffusor Condition:
 Fuel Pump: NONE PreHeater: NO Oil Cooler: NO Starter: NO
 Fuel Bypass Valve & Gage: NO Spark Arrestors: NO Exhaust Leaks:
 Spin On Filters: Load Regulator Style: NONE Defective Tag: Yes/No
 Radiators: NONE Leaks: Radiator Type: Solder Mech Bond
 Fire Extinguishers: Longhood: NO Cab: NO
 AC Cabinet: YES - SHELL ONLY - STRIPPED Fan Fuses 200lb. Air Gauge: NO
 Air Compressor Type: NONE Base Style: Condition:
 Air Filter Type/System: Condition:
 Air Filter Media Type: NONE
 Air Braker Type/System: 26L Condition: FAIR TO POOR
 EMD Main Gen/Alt. Type: MISSING S/N: Condition:
 EMD Aux. Generator Type MISSING S/N: Condition:
 GE AUXI: Model: S/N: Condition:
 GE EXCITER: Model: S/N: Condition:

[illegible]



Locomotive Inbound Inspection Report
Document Control No.: QF-10007
Release Document :
Revision: Rev 1